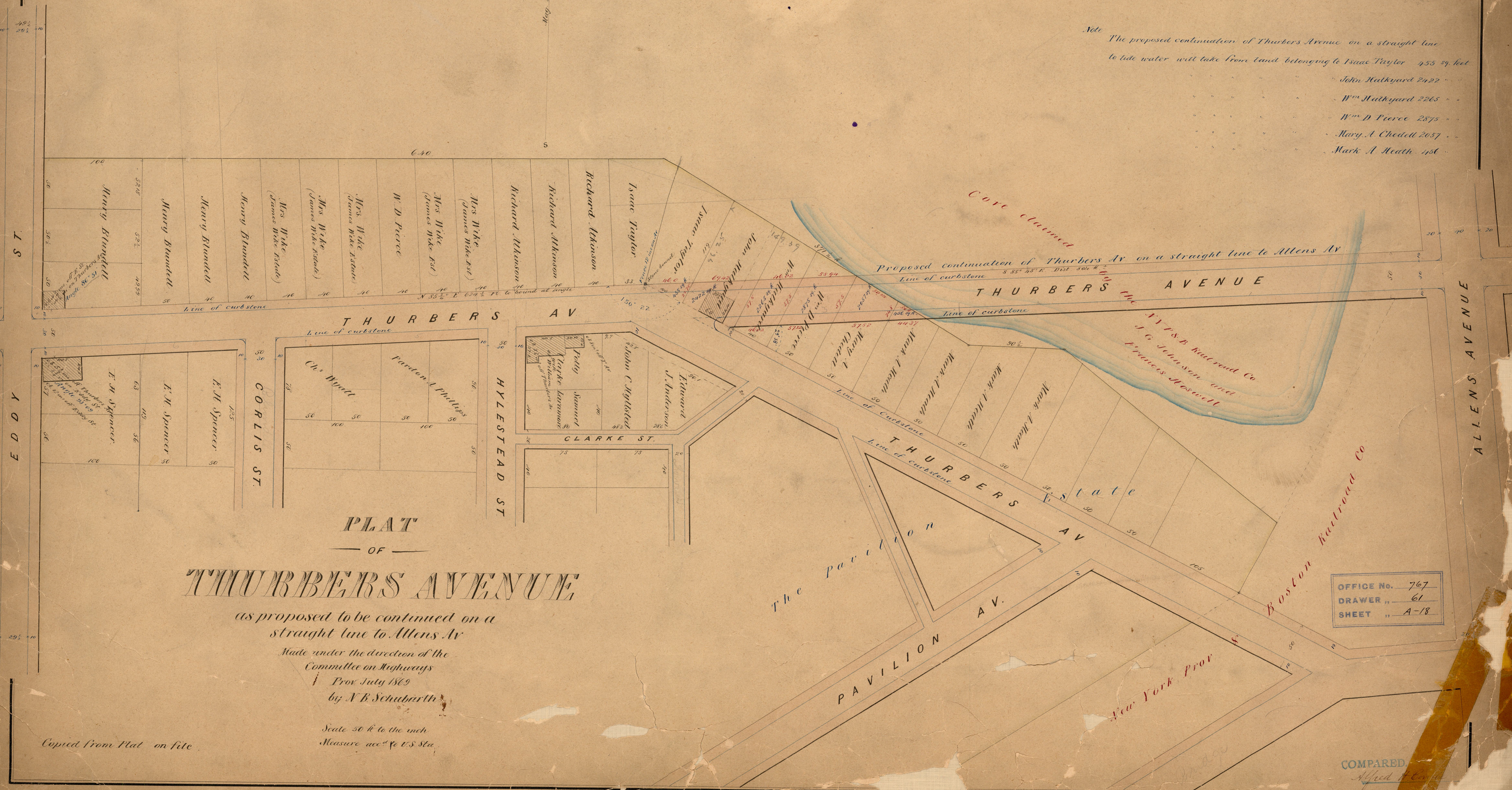


W E

Mag. Meridian

Note
 The proposed continuation of Thurburs Avenue on a straight line
 to tide water will take from land belonging to Isaac Taylor 455 sq. feet
 John Hathyard 2422
 Wm. Hathyard 2265
 Wm. D. Pierce 2875
 Mary A. Chedell 2057
 Mark A. Heath 456



PLAT
 OF
THURBERS AVENUE

as proposed to be continued on a
 straight line to Allens Av

Made under the direction of the
 Committee on Highways
 Prov July 1869
 by A. B. Schubarth

Scale 50 ft to the inch
 Measure acc. to U.S. Sta.

Copied from Plat on file

OFFICE No. 767
 DRAWER " 61
 SHEET " A-18

COMPARED
 Alfred H. Co.